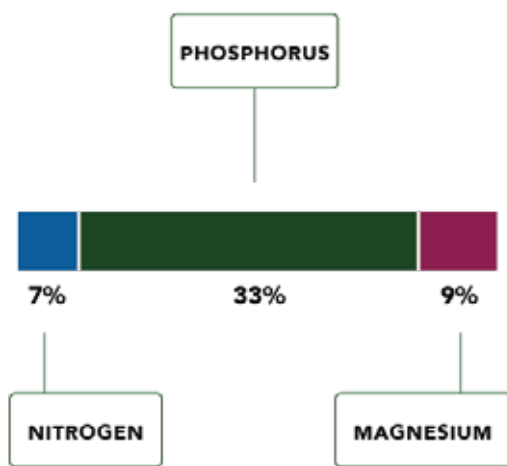




Crystal Green[®]
by **OSTARA**

CANOLA THRIVES WITH CRYSTAL GREEN

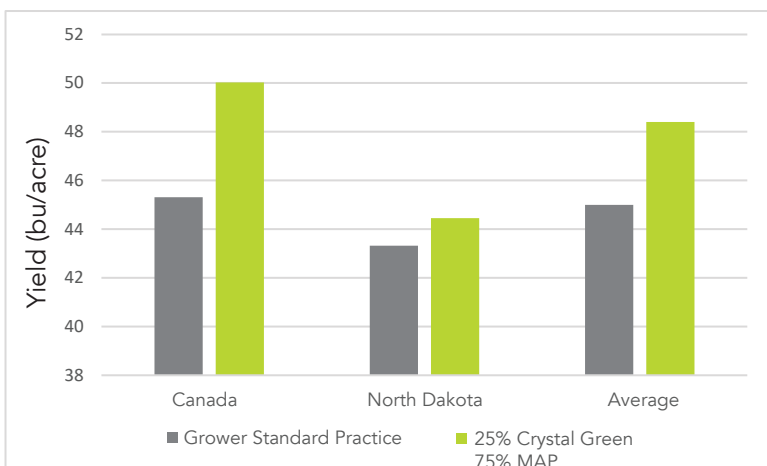
Crystal Green (7-33-0 with 9% Mg) is the only granular phosphate fertilizer that releases nutrients in response to crop demand. With its unique organic acid solubility, delivering phosphorus plus magnesium and nitrogen, Crystal Green enables growers to do more with less, achieving higher yields with fewer inputs and reduced environmental impact.



Research Proven Results

Adding Crystal Green fertilizer yields greater results versus grower standard practice. Trials conducted at seven locations with replicated plots applying Crystal Green and MAP in furrow.

Results show the reduced salt index and additional plant-available phosphorus from Crystal Green resulted in an average of three bushels per acre.

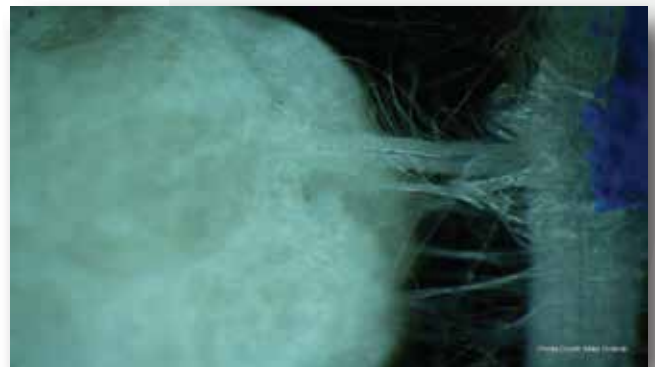


Full data available upon request

How Crystal Green Works

As roots naturally exude organic acids, Crystal Green solubilizes to release nutrients when crops need them throughout the growing season. Due to this unique solubility, nutrients released from Crystal Green are over 90% plant available and avoid being lost due to soil tie-up, runoff and leaching.

With ongoing access to phosphorus, driven by crop demand, Crystal Green safely supplies canola with the nutrients they need throughout the growing season.



Lower Salt Index - Improved Seed Safety

Canola fertilized with conventional phosphate fertilizers can be injured when the fertilizer is placed near the seed due to the higher salt index. This injury to seedlings reduces stand count and ultimately, yield.

Crystal Green's salt index is one quarter of that which is found in MAP. This reduced salt index increases seed safety by reducing salt injury for an increase in stand count for maximized yield.

