



Crystal Green[®]
by OSTARA

MAKE THIS YEAR'S WHEAT CROP THE BEST EVER WITH CRYSTAL GREEN[®]

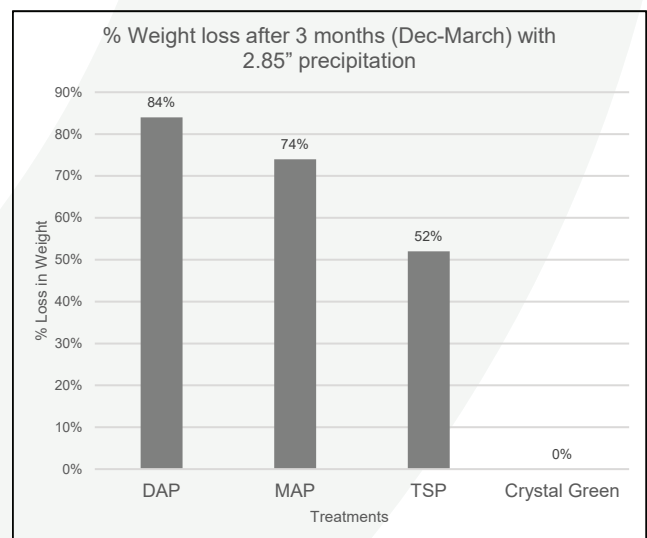
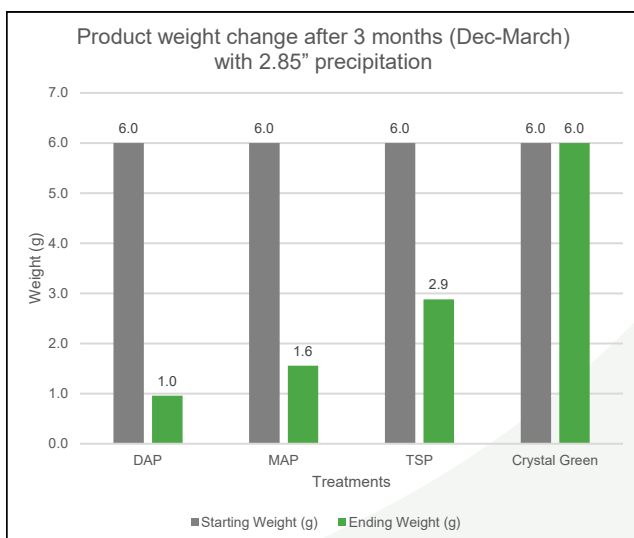
Crystal Green (7-33-0 with 9% Mg) is the only phosphate fertilizer that releases nutrients in response to your wheat crop's needs. By providing nearly 100% plant available nutrients, Crystal Green enables wheat growers to provide more nitrogen, phosphorus and magnesium whenever your wheat crop needs it - from beginning to end.

Crystal Green – The Best Choice for Wheat Growers

- ✓ Provides nearly 100% plant available nitrogen, phosphorus, and magnesium season long
- ✓ Virtually 100% seed safe even at rates more than 3X conventional phosphates
- ✓ Uniform emergence, greater stand count with added vigor
- ✓ Eliminate nutrient loss from soil tie-up, runoff and leaching
- ✓ Increases soil health by supporting both microbial viability and bacterial diversity
- ✓ Apply the same way you apply fertilizers now
- ✓ Spend the same amount per acre and get over 2X available nutrients season long and apply over 30% less fertilizer per acre

Zero Loss Until the Crop Needs It

Crystal Green's unique solubility ensures nutrients are not lost due to moisture from rain or snow melt. In a recent study with CropSmith, Inc., samples of Crystal Green and other conventional phosphates were buried in mesh bags and recovered three months later. Results show Crystal Green is completely intact with no change from moisture. The buried bags of conventional phosphate fertilizers were virtually gone.

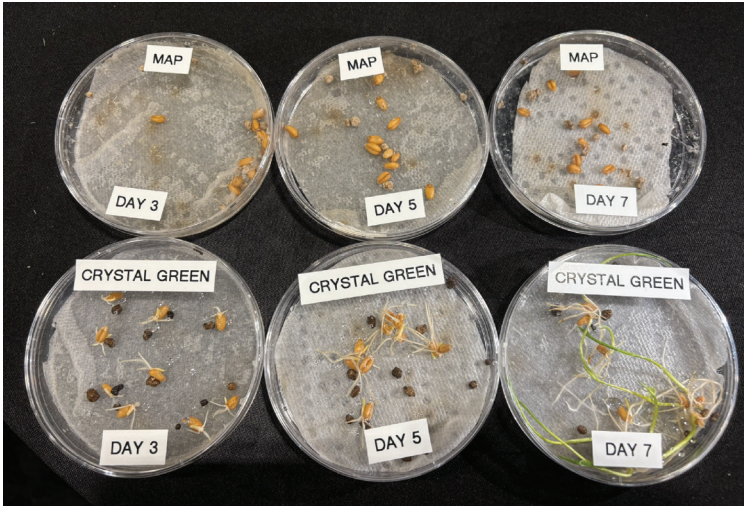




Crystal Green – The Safest Choice for Seeds

In a side-by-side demonstration, wheat seeds were placed with Crystal Green or MAP and watered to visually show seed safety.

The petri dishes with MAP showed no emergence, versus the samples of Crystal Green that displayed healthy germinating wheat and 100% emergence.



Nitrogen, Phosphorus and Magnesium are Critical for Wheat Yield and Quality

Wheat needs adequate amounts of nitrogen (N), phosphorus (P), and magnesium (Mg) for optimal growth and yield. Nitrogen is often the most limiting nutrient for wheat production. Phosphorus is crucial for initial growth and winter hardiness, while magnesium can enhance nitrogen use efficiency and improve overall crop health.

Nitrogen (N)	Phosphorus (P)	Magnesium (Mg)
<p>Requirement:</p> <ul style="list-style-type: none"> N drives early season root growth and impacts grain yields and protein content <p>Deficiency Symptoms:</p> <ul style="list-style-type: none"> Reduced tillering, smaller heads, poor grain fill, and low protein content 	<p>Requirement:</p> <ul style="list-style-type: none"> Adequate P is essential for fall growth and establishment of winter hardiness <p>Deficiency Symptoms:</p> <ul style="list-style-type: none"> Older leaves may turn yellow, orange, or brown Plants may exhibit stunted growth and poor tillering 	<p>Requirement:</p> <ul style="list-style-type: none"> Mg is important for enzyme activity and overall plant health, and enhanced nitrogen use efficiency <p>Deficiency Symptoms:</p> <ul style="list-style-type: none"> Mg deficiency can be more likely in acidic soils or those with high potassium levels